

# ANTARCTICA – IT IS ALL ABOUT THE WEATHER!



Part 1: My Antarctic Experience

Part 2: Sub Antarctic Islands of NZ & Oz

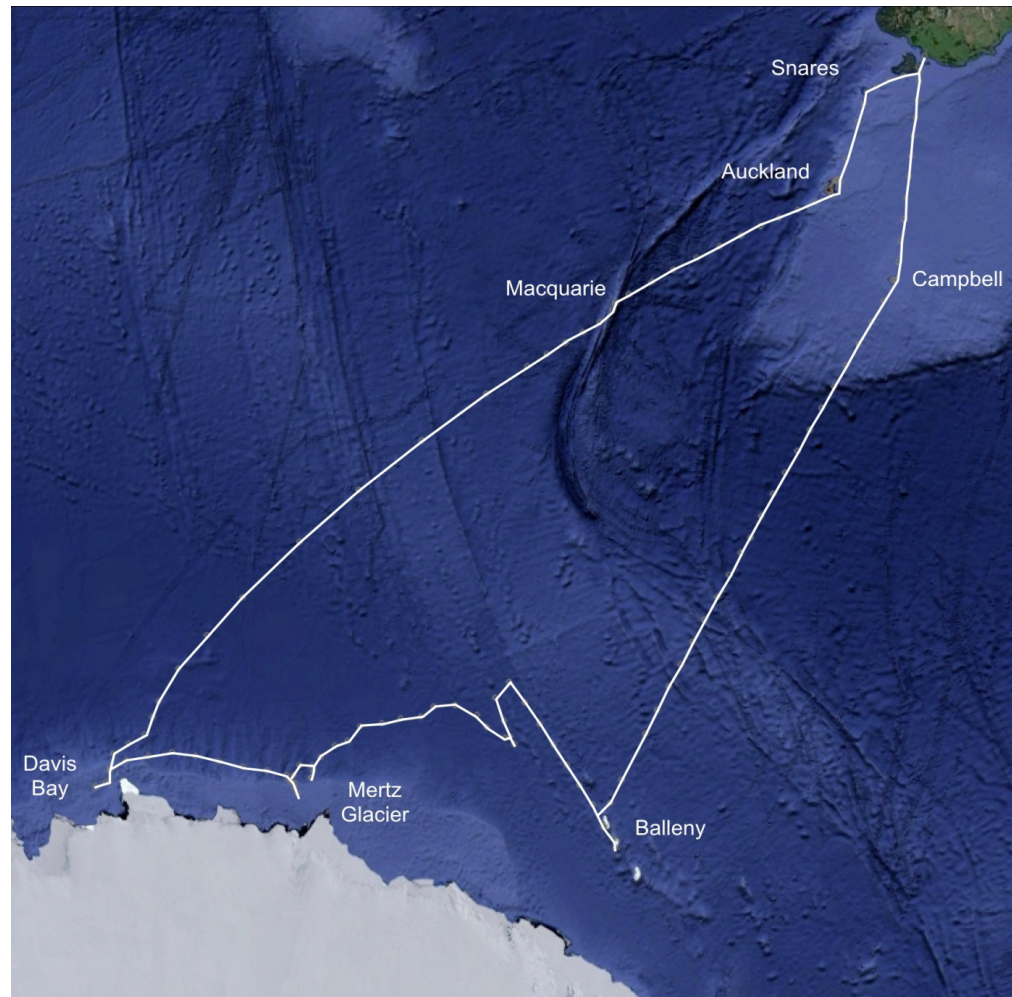
Part 3: Sea Voyage of the Southern Ocean



**SUMMARY:**

4 weeks on the southern ocean; 8,200 kms; 10 days within the Antarctic region;  
reaching the furthest point of 66° 55' latitude  
Over 1500 photos and 450 videos

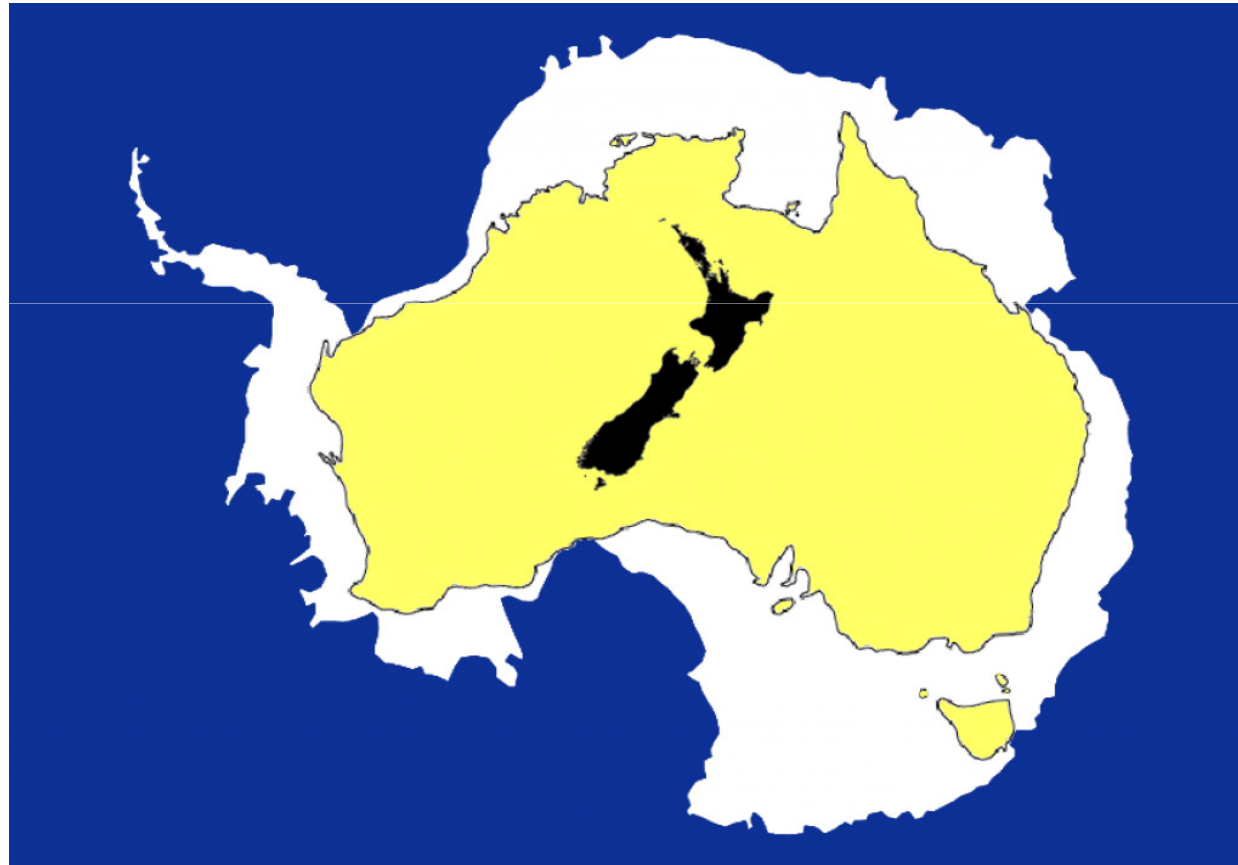
# Where we went



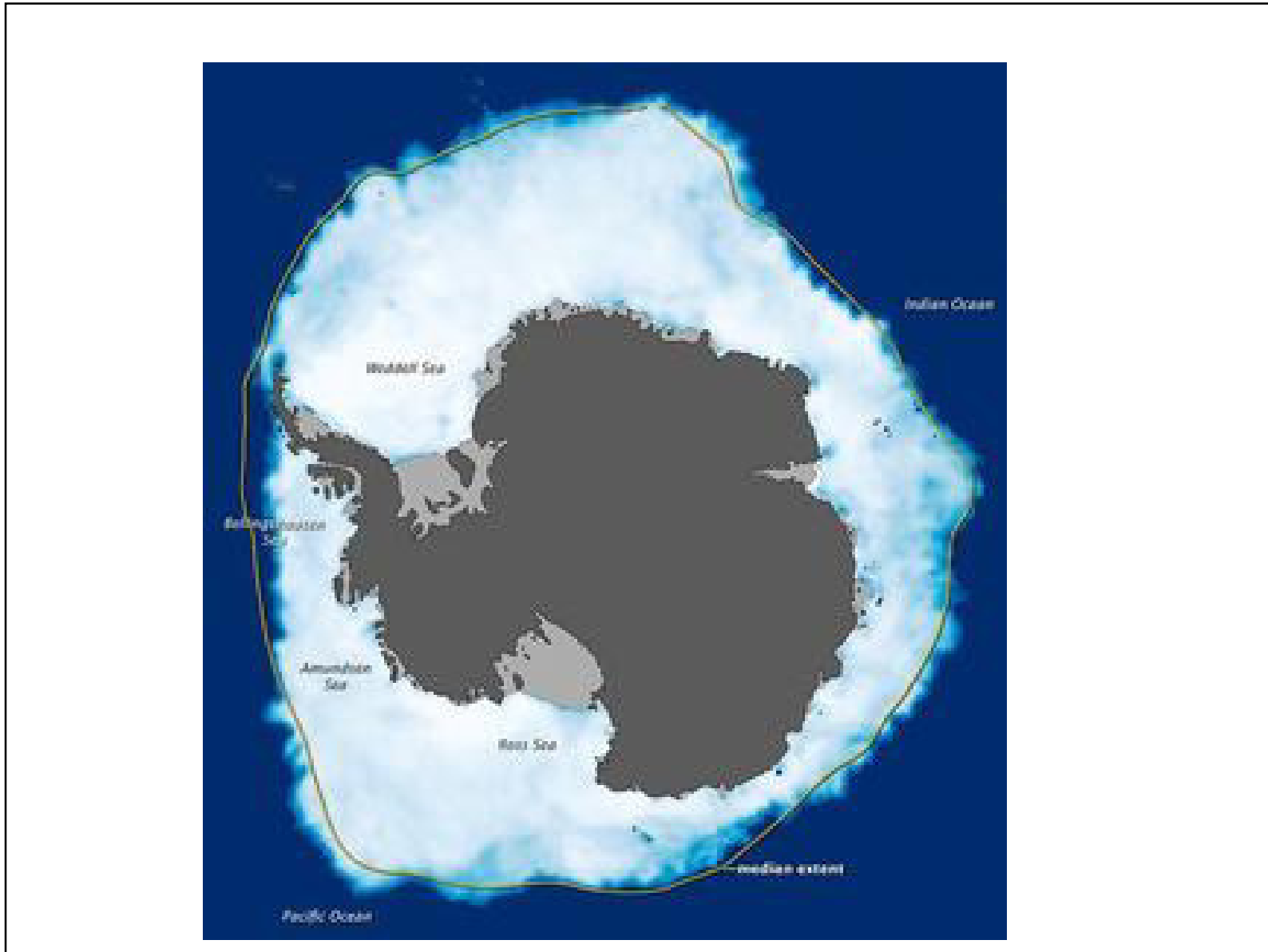




**How big is Antarctica?** Including all the islands and ice shelves, Antarctica is nearly twice the size of Australia, covering 13,661,000 km<sup>2</sup>. In winter the increase in sea ice can nearly double the size again







# My Antarctic Experience

**Balleny Islands:** These islands are often inaccessible because of the drifting ice, which encircles them almost all the year. It is for this reason that they are among the least visited and least known of the islands around the Antarctic continent. They straddle the Antarctic Circle at the top of the Ross Sea. This is what the Antarctic continent can look like.



**The Balleny's**

**[Aerial view of the Balleny's](#)**



# To get a sense of the size of the ice cliffs

**Perspective**



# Celebrating the crossing of the Antarctic Circle – 66° 34'

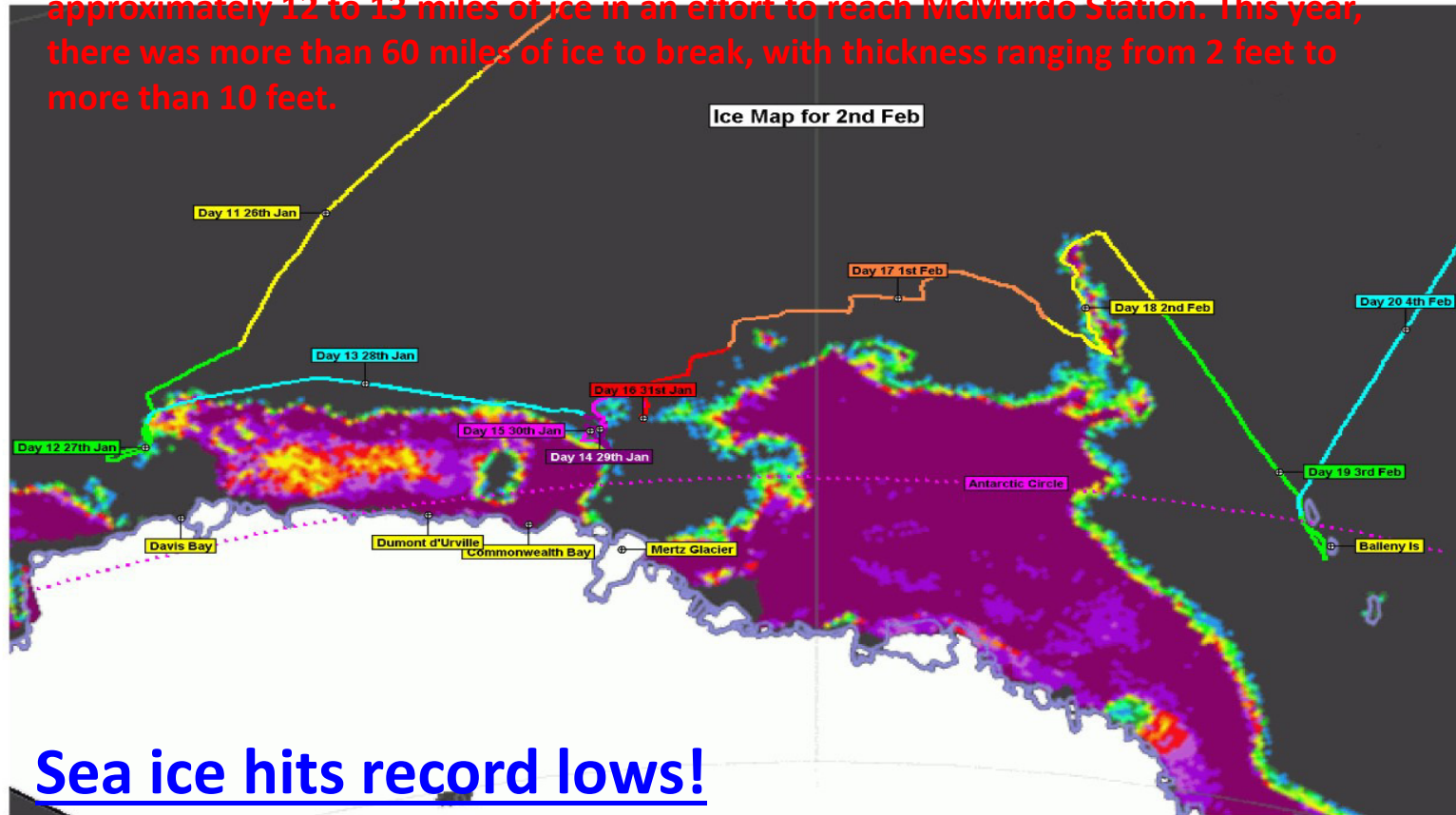


On the bridge  
Daft things done on board to  
celebrate the event!



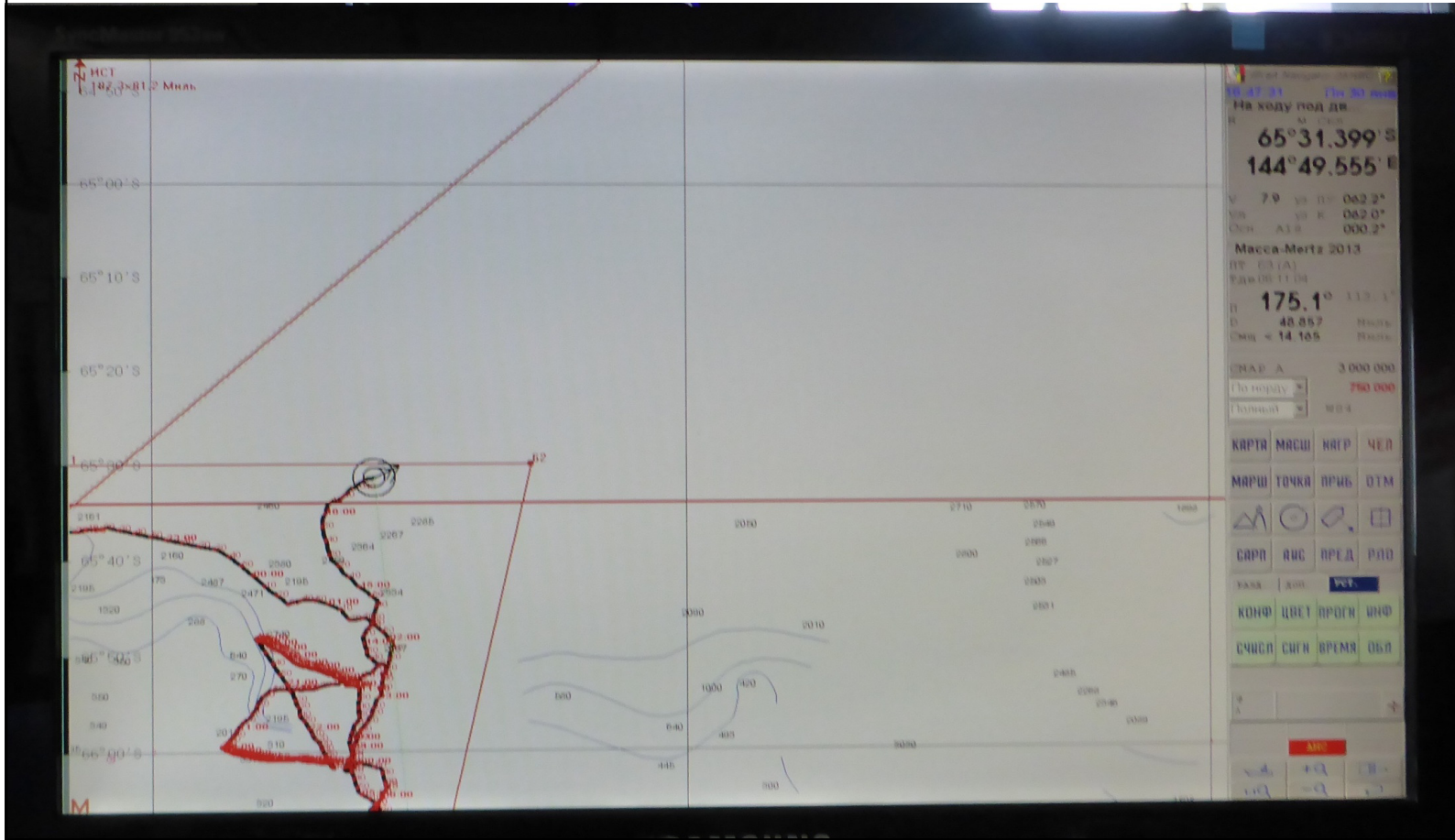
# Pack ice defeats us!

Polar Star is America's only operational heavy icebreaker that is capable of conducting the Antarctic resupply mission. In the past few years, Polar Star's crew worked through approximately 12 to 13 miles of ice in an effort to reach McMurdo Station. This year, there was more than 60 miles of ice to break, with thickness ranging from 2 feet to more than 10 feet.



Sea ice hits record lows!

# Trying to find our way through the ice







# While in the neighbourhood – South Magnetic Pole





# What is it like in the pack ice?

Pack ice is formed when the sea freezes – it is made of fresh water as the salt is extruded as it freezes and sinks forming a denser layer . The sea begins to freeze at -1.8 degrees

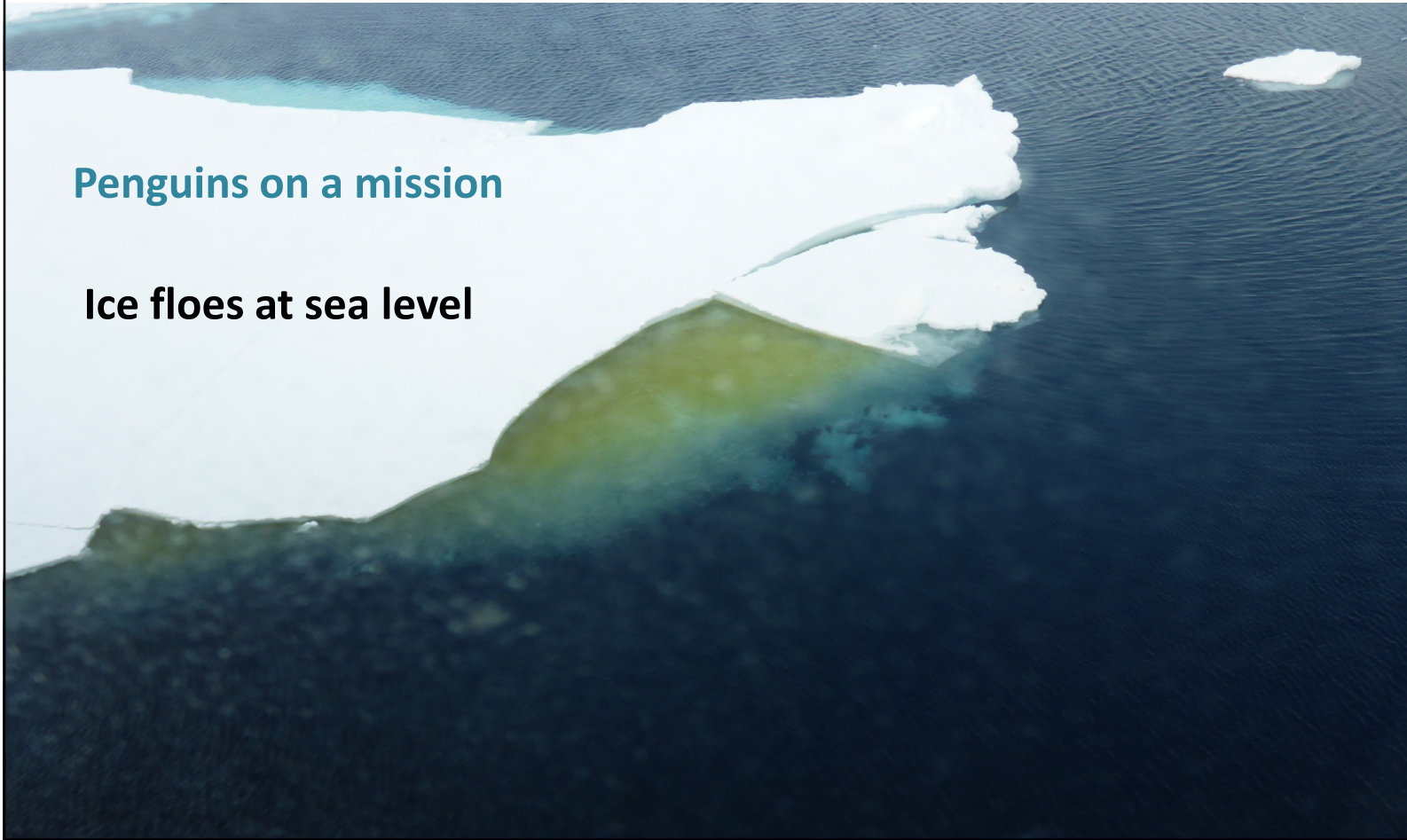


**Pack ice crunching**      **Passing parade**

# There is more to the pack ice than just ice

Penguins on a mission

Ice floes at sea level





## Meeting the natives – Adelie Penguins

They come to join us and they stay!



The nesting Adelie



# The Emperor



Emperor Penguins

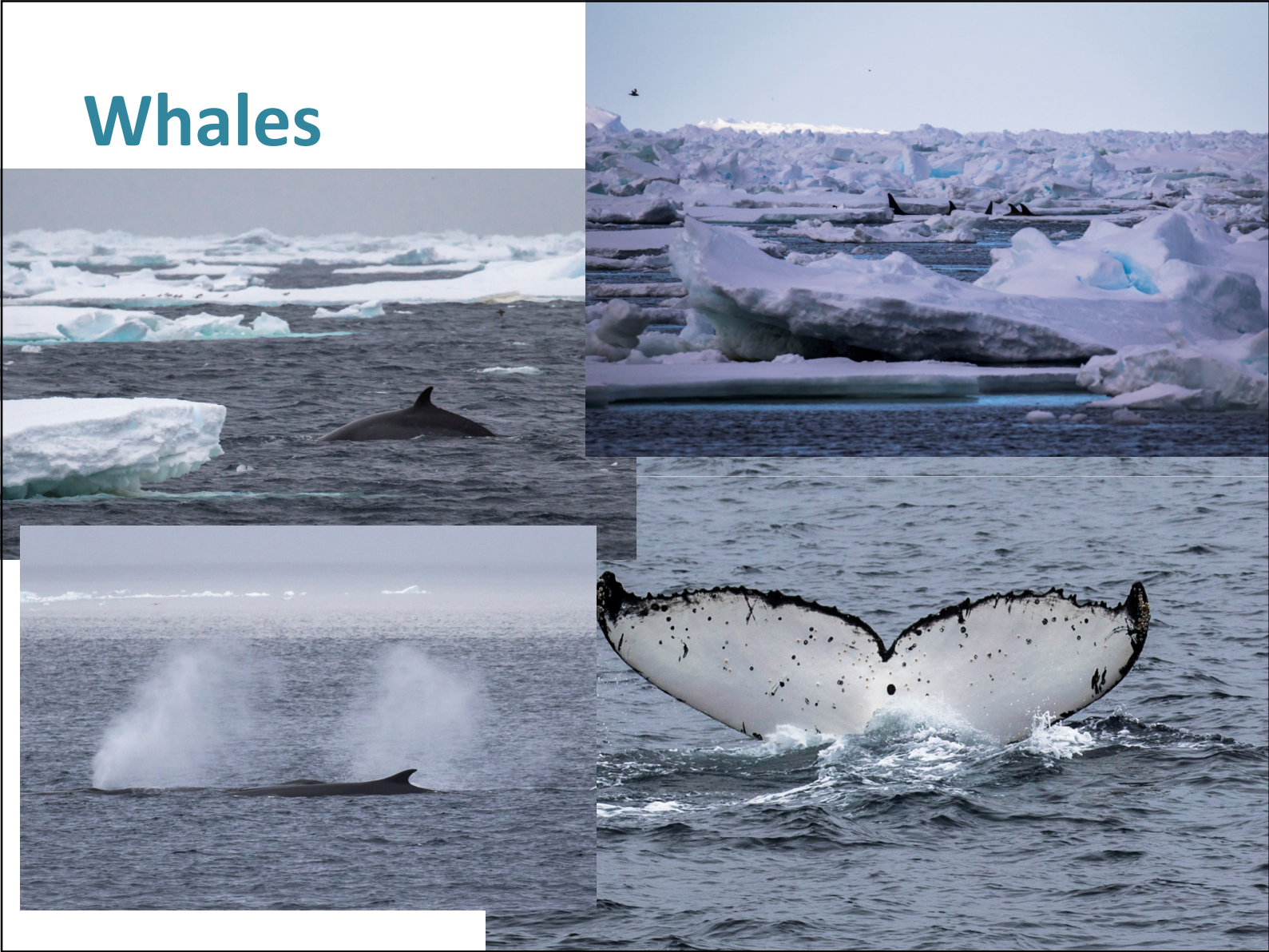
# Crabeater Seal

Act: one; two, three; four; five; six





# Whales

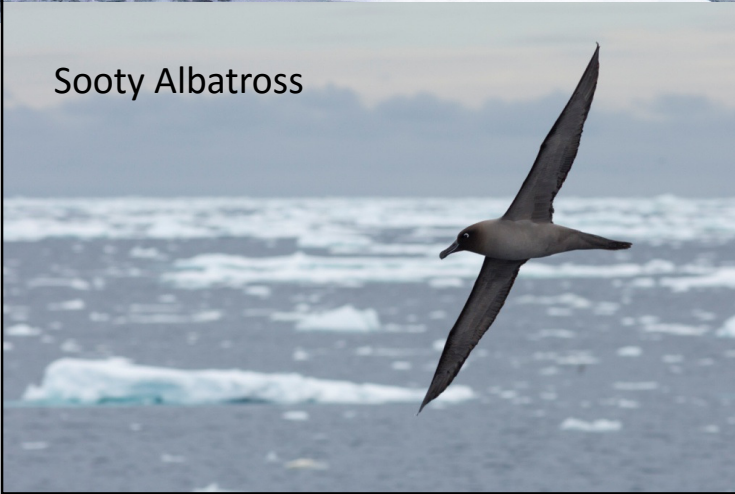




# And of course the birds



Arctic Terns



Sooty Albatross





# And some more...

Snow Petrel



Antarctic Petrels



# Icebergs – our first sightings



**Icebergs are formed by breaking off or “calving” from glaciers. Do these look very big?**



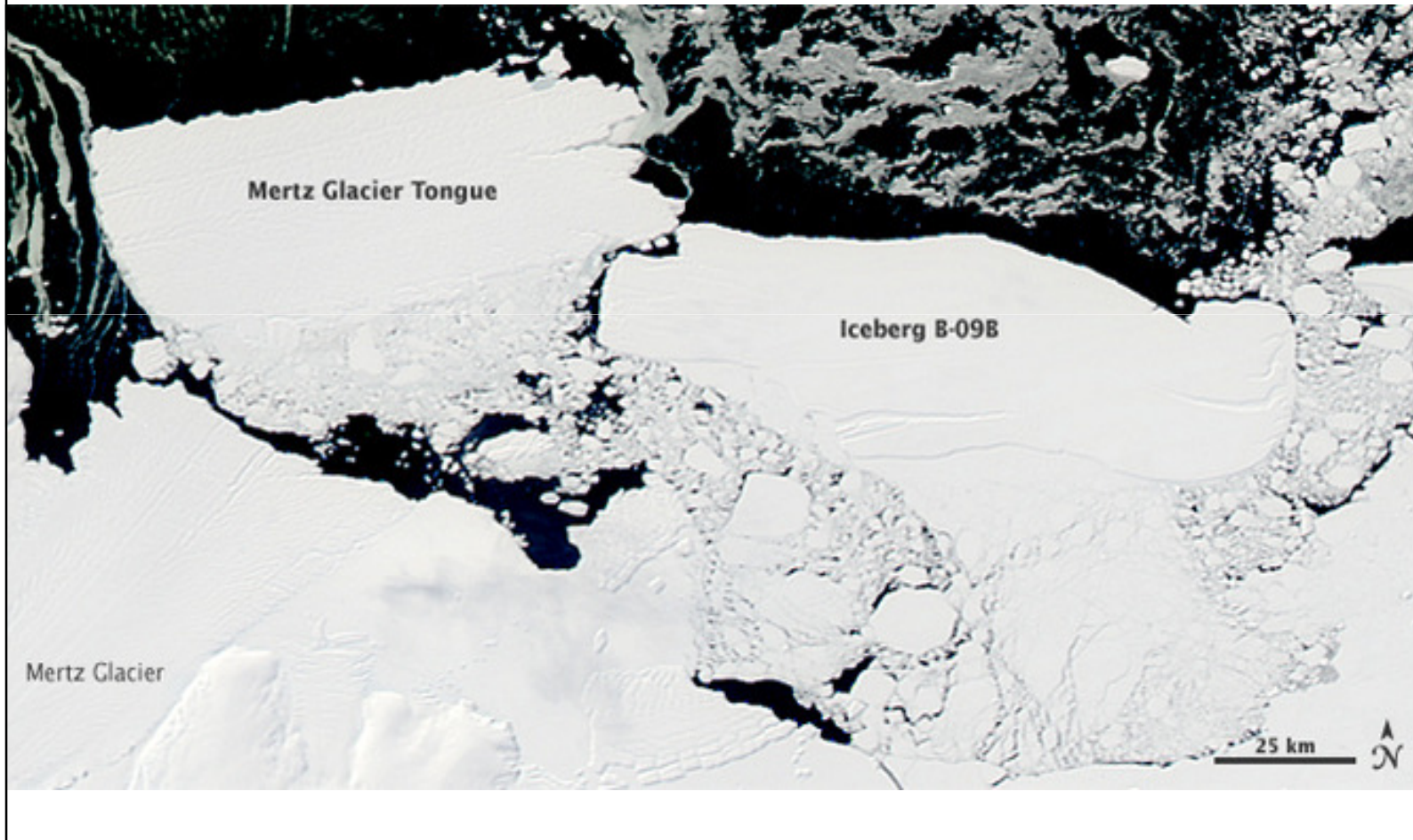
# Some perspective



Iceberg Cemetery

*Judy Leitch*

**ICEBERGS: They can be VERY big! Mertz Glacier Tongue is 78 kilometers (48 miles) long by 39 kilometers (24 miles) wide and has a mass of 700-800 billion tons**





## Chasing a sunset over the ice



Forgot the gloves!

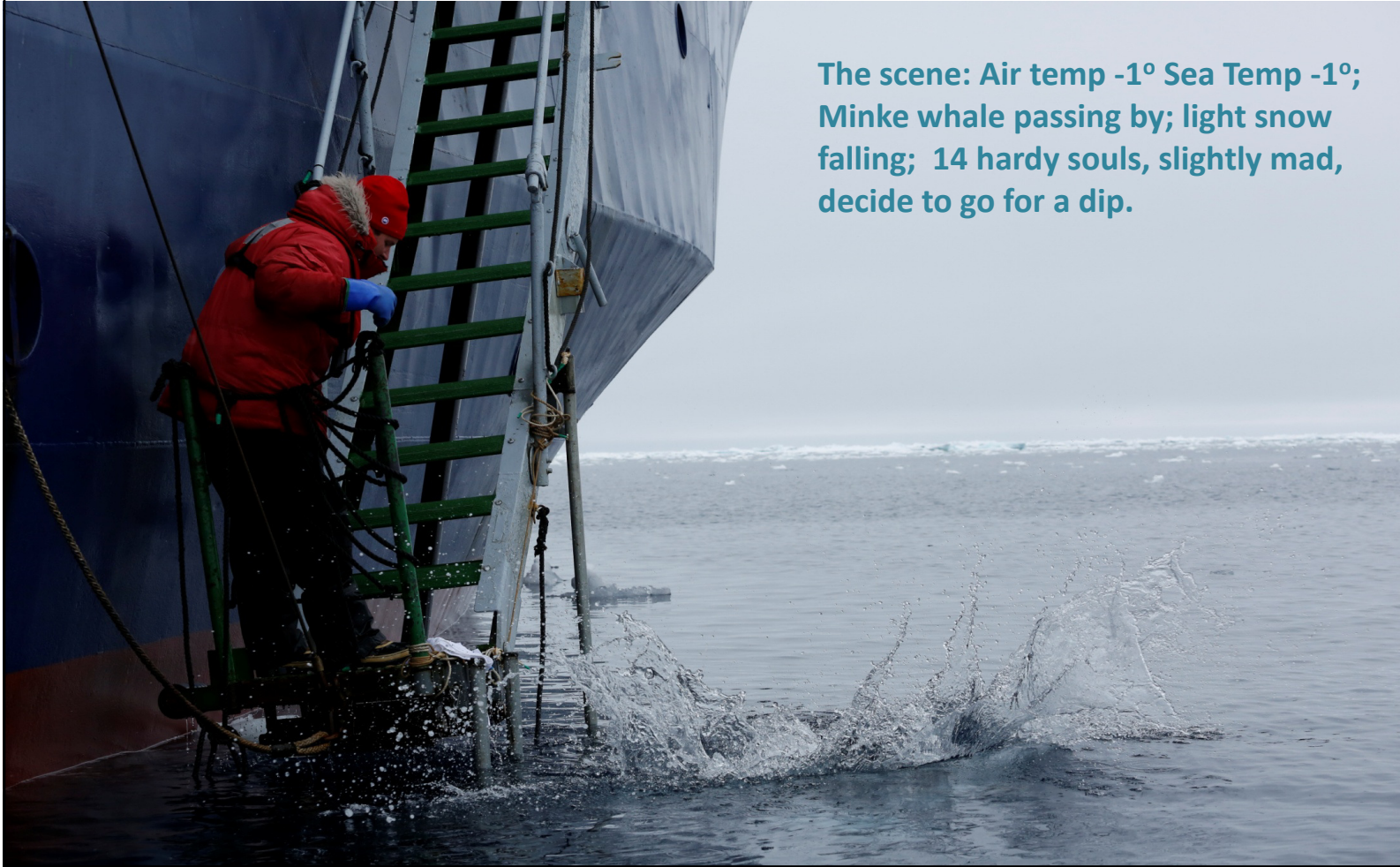


## And 5 hours later a sunrise





# Polar Plunge



The scene: Air temp  $-1^{\circ}$  Sea Temp  $-1^{\circ}$ ;  
Minke whale passing by; light snow  
falling; 14 hardy souls, slightly mad,  
decide to go for a dip.